

AN INTRODUCTION TO THE NZSAR RESOURCE DATABASE



Database Overview

- The NZ SAR Resources Database is set up to assist emergency services and those involved in SAR operations to easily locate a large range of resources and a list of the capabilities /equipment that may assist in the running of a SAR operation.
- The Database is sponsored by NZSAR and administered by the Rescue Coordination Centre New Zealand (RCCNZ).
- For privacy reasons, the database is restricted to groups or persons who have been issued with a password.



Hello, first time visiting here?

Welcome to the NZSAR Resources website. As it's your first time, it's recommended to pop over to the FAQ. You'll be able to find out information here regarding this place and how to use the tools available.

[Take me to the FAQ](#)

Search & Rescue Operator

Need to reference something or check a process? Visit the guidelines page to get started.

[Open Guidelines](#)

Search & Rescue Resources

Whoa! Got an incident on? Need a resource ASAP? Well, you've come to the right place. No time to mess around, click the link below to log in and go directly to the map section to select a resource for tasking.

[Find a resource](#)

Account Login

Username:

Password:

Remember Me

[Login](#)

[Forgot Password?](#)



Need help?

Are you working on a SAR incident and having difficulty finding a resource? Feel free to contact RCCNZ and request assistance

 Address : Rescue Coordination Centre New Zealand, PO Box 30050, Lower Hutt

 Phone : (+64) - 4 - 577 - 8030

 Email : rccnz@maritimenz.govt.nz

 Fax : (+64) - 4 - 577 - 8049

[SEND EMAIL](#)

To locate the Resource Database

Follow the link: <http://nzsar-resources.org.nz/>

This will open the Database home page.

Alternatively, this will also lead to the home page.

- Google 'NZSAR'. This will open the NZSAR home page.
- Scroll down towards the bottom of the page and click on the "RESOURCES ICON"



In both cases bookmark the home page for future use.

Login

Once the home page is open, you will need to scroll to the bottom section and locate the Account login section.

There is a generic login you can use for the Database:

Please keep that secure.



Hello, first time visiting here?

Welcome to the NZSAR Resources website. As it's your first time, it's recommended to pop over to the FAQ. You'll be able to find out information here regarding this place and how to use the tools available.

[Take me to the FAQ](#)

Search & Rescue Operator

Hello again and thanks for visiting. Without you, this site would look a little empty. You've probably arrived to update your resource details. Best place to start is to log in and head over to the resources section.

[Update my details](#)

Search & Rescue Coordinator

Whoa! Got an incident on? Need a resource ASAP? Well, you've come to the right place. No time to mess around, click the link below to log in and go directly to the map section to select a resource for tasking.

[Find a resource](#)

Account Login

Username:

Password:

Remember Me

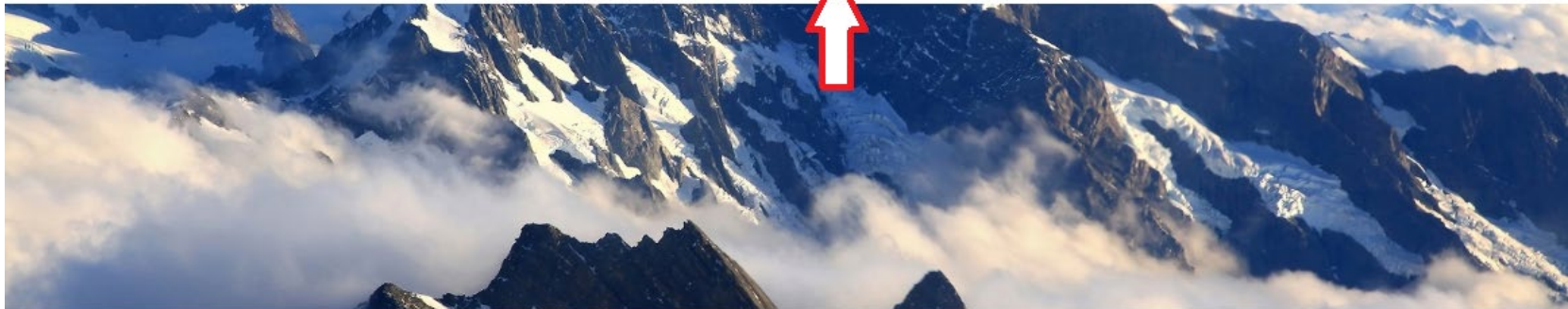
Need help?

Are you working on a SAR incident and having difficulty finding a resource? Feel free to contact RCCNZ and request assistance.



Address: Rescue Coordination Centre New Zealand, PO Box 30050, Lower Hutt

Once in the Database Home page go to the top of the screen and select MAP



Hello, first time visiting here?

Welcome to the NZSAR Resources website. As it's your first time, it's recommended to pop over to the FAQ. You'll be able to find out information here regarding this place and how to use the tools available.

[Take me to the FAQ](#)

Search & Rescue Operator

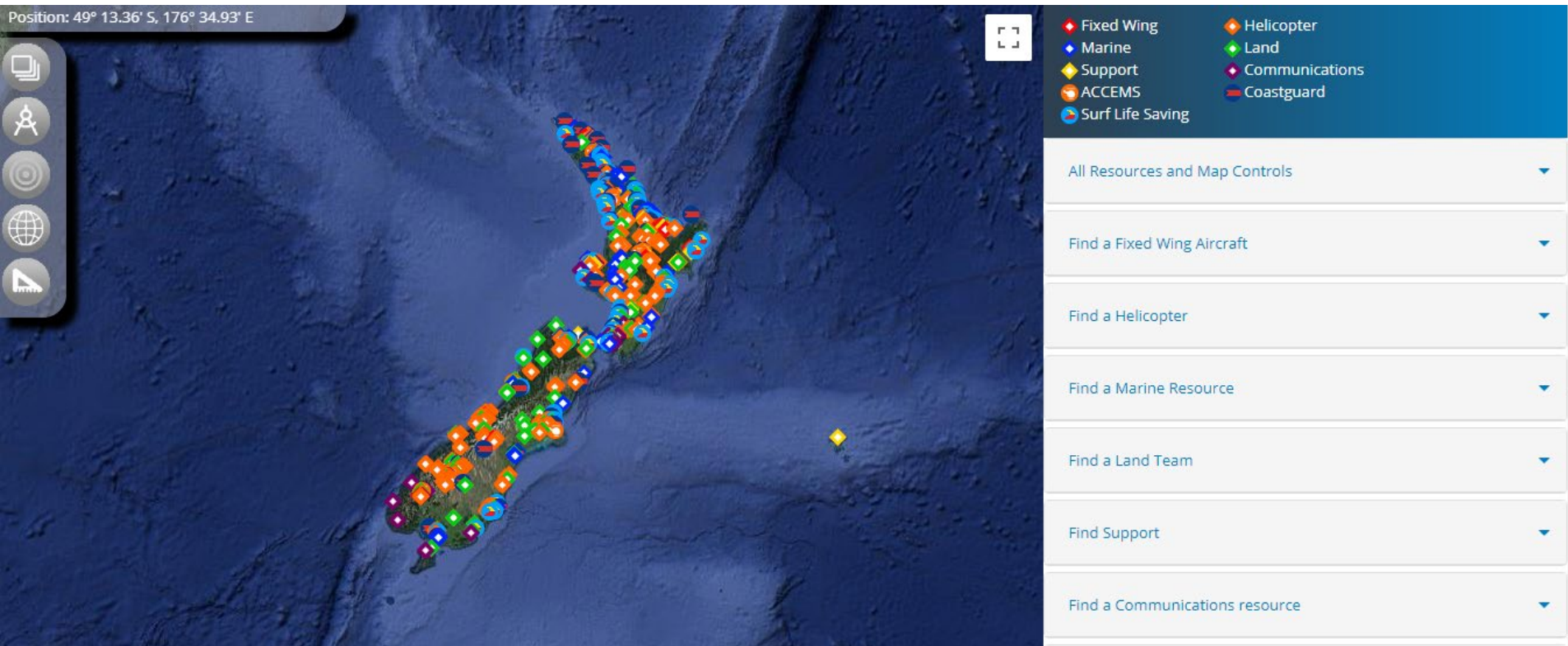
Need to reference something or check a process? Visit the guidelines page to get started.

[Open Guidelines](#)

Search & Rescue Resources

Whoa! Got an incident on? Need a resource ASAP? Well, you've come to the right place. No time to mess around, click the link below to log in and go directly to the map section to select a resource for tasking.

[Find a resource](#)

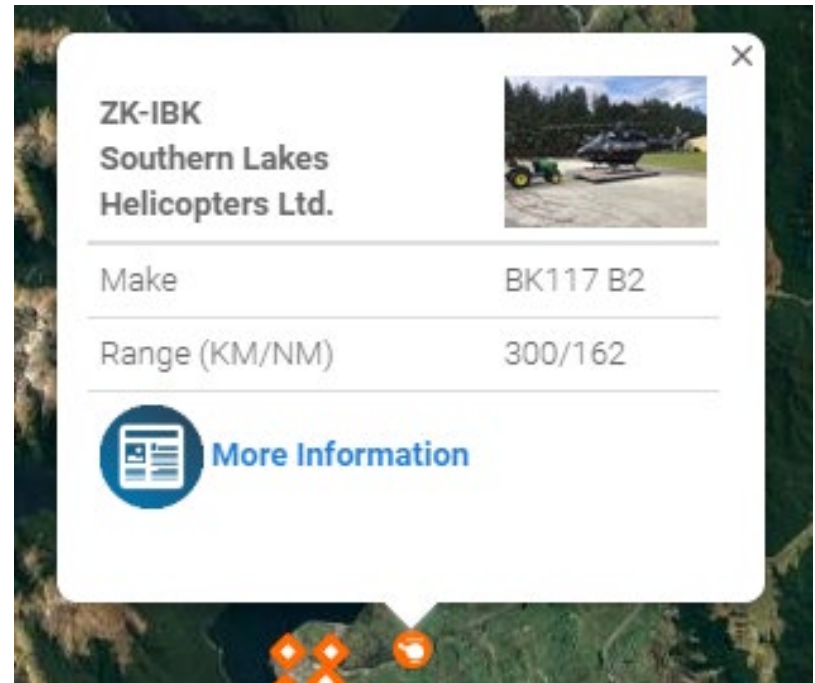


- Note the Legend in the top right corner to interpret the icons on the map.

- Below the Legend on the right side is the ability to select the type of asset you want, for example find a helicopter;
- Click on the arrow on the right and a drop box will appear allowing you to refine your search e.g. you need a winch equipped helicopter, check the box beside winch and all winch equipped helicopters will show on the map.



- Find a helicopter in the area of a SAROP and click on the icon.
- A box will appear giving the operator, helicopter type and range.
- For further details click on the blue circle - [More Information](#).



ZK-IBK



Make:

BK117 B2

Southern Lakes Helicopters Ltd.

Address: P.O.Box 156

City/Town: TeAnau Southland

Fiordland

Phone: 03 249 7167

Fax: 03 249 7267

Email: info@southernlakeshelicopters.co.nz

Region: Southland

Last Updated:

03/09/2019 - Keith Allen

A window will appear on the right giving detailed information on the operator, contact phone number, capability and some helicopter specifications.

Tasking:

Phone: 03 249 7167

Capabilities:

- ACCEMS Winch Airdrop Liferaft Aviation VHF
- Cellphone Defibrillator DF VHF DOC Radio
- Fire Fighting Gear Fuel Tanker GPS Longline
- Marine VHF NVG Oxygen SAT Phone
- Scoop Net Twin engine

1 / 5

Crew /
Pax

120

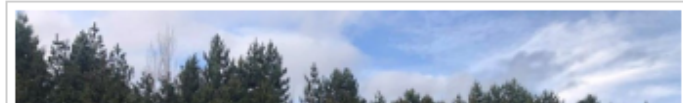
Speed
knots

300

Range
(KM)

162

Range
(NM)



In this detailed information area, you may see an image of a paper clip.

This indicates there is an attachment with further information.

Click on the paper clip and open a Word document with the information.

Capabilities:

- LandSAR 4X4 Above Bushline (Summer)
- Above Bushline (Winter) Aviation VHF GPS
- Hand Held DF HF Radio IMT
- Portable Radio Repeater VHF Radios



Other Useful Tools

The top left corner of the page shows a number of tools that can be useful, try these tools to see what effect they have;

- At the top is the ability to change the map type.



Other Useful Tools

Next is the ability to add or remove a draggable datum marker which can be placed over the incident location.



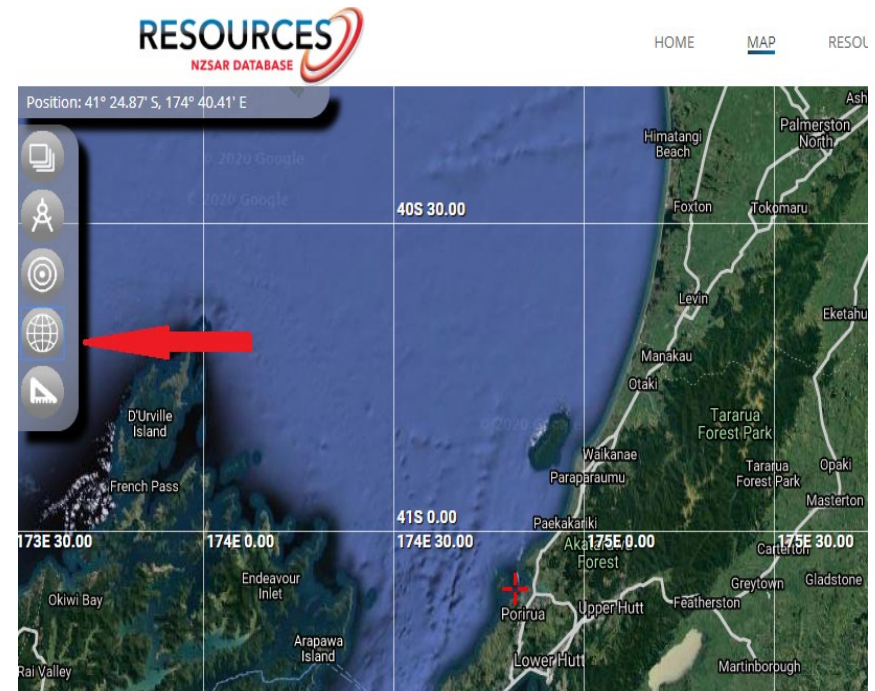
Other Useful Tools

- Click on the third icon down to add or remove range rings from the datum marker;
- This will allow you to find the nearest suitable resource to the incident location;
- The range measures in both *kilometre* and *nautical miles* and the distance between rings changes with zooming in and out.



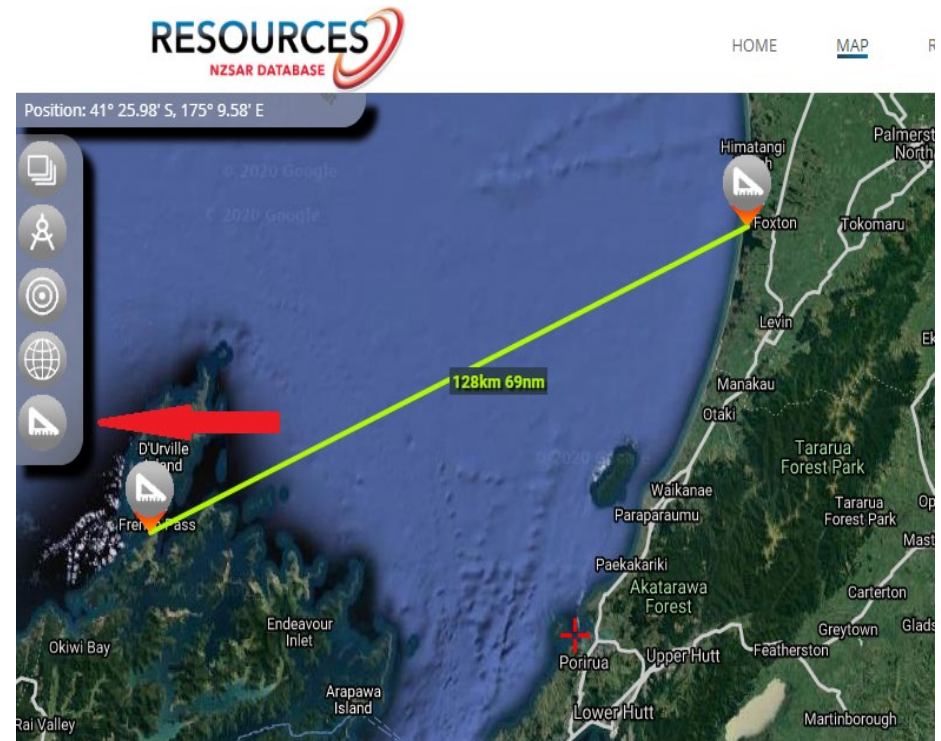
Other Useful Tools

- The fourth icon allows you to add a WGS84 latitude and longitude grid.



Other Useful Tools

- Lastly, the fifth icon enables you to measure distances in both kilometres and nautical miles.
- Either end of the line can be dragged and dropped anywhere on the map.



Next Steps

You are all done for this new-user information. Now find the Database website and try the features for yourself.

Become familiar with the navigation structures of the Database so you are confident using those when called on.

- Note there is a downloadable and print ready copy of this presentation for you.

<http://nzsar-resources.org.nz/>