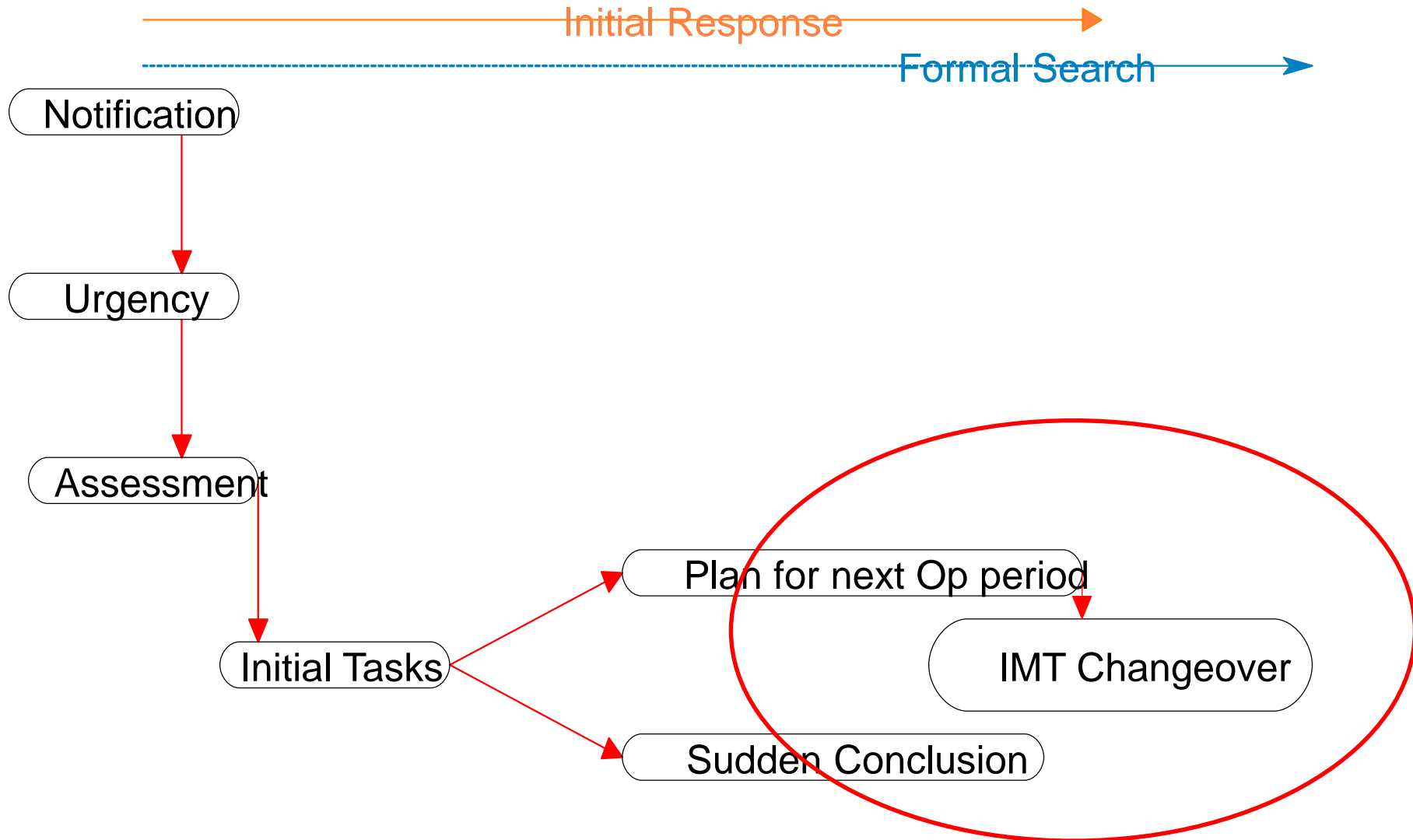


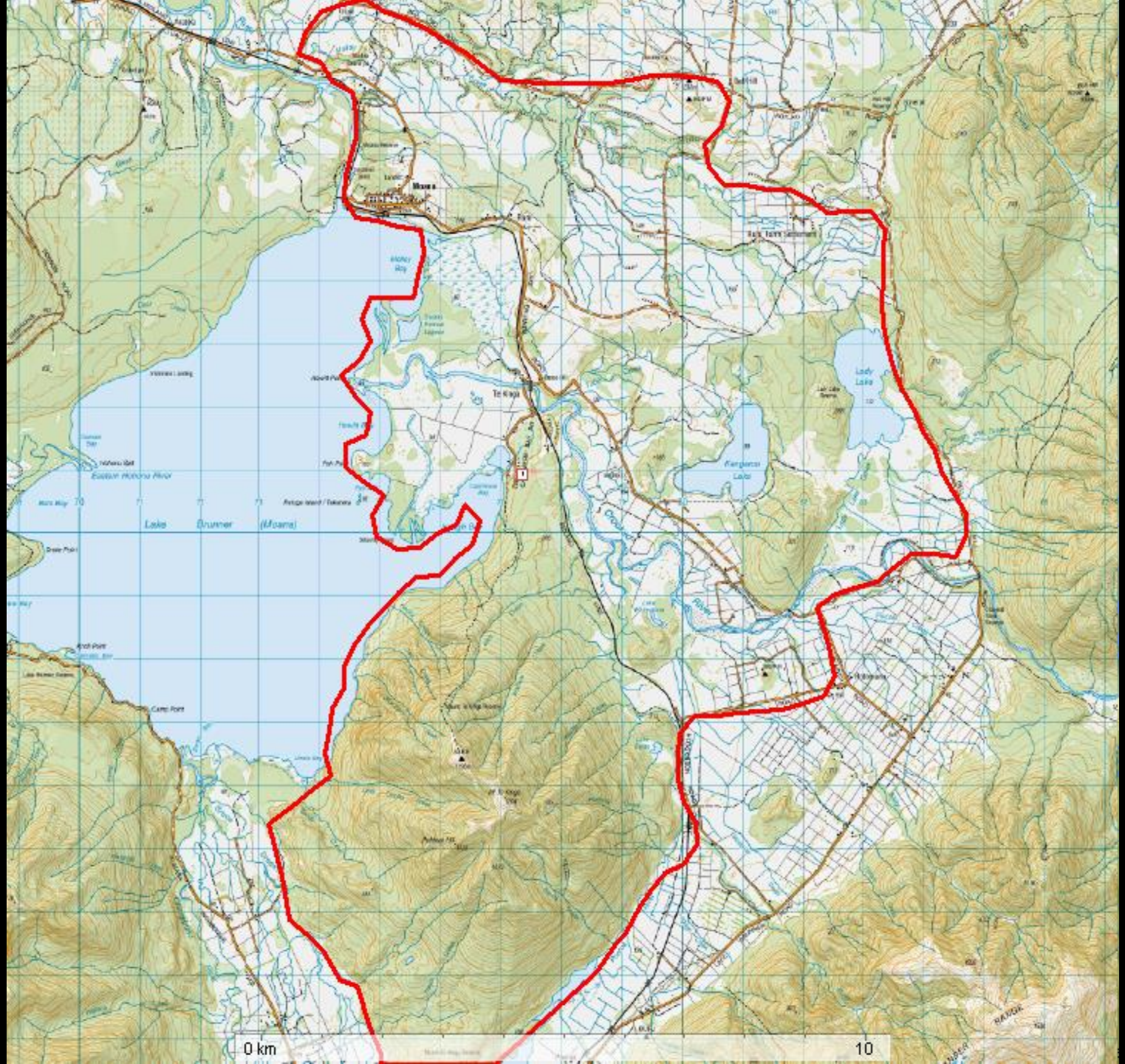
Subdividing the Search Area

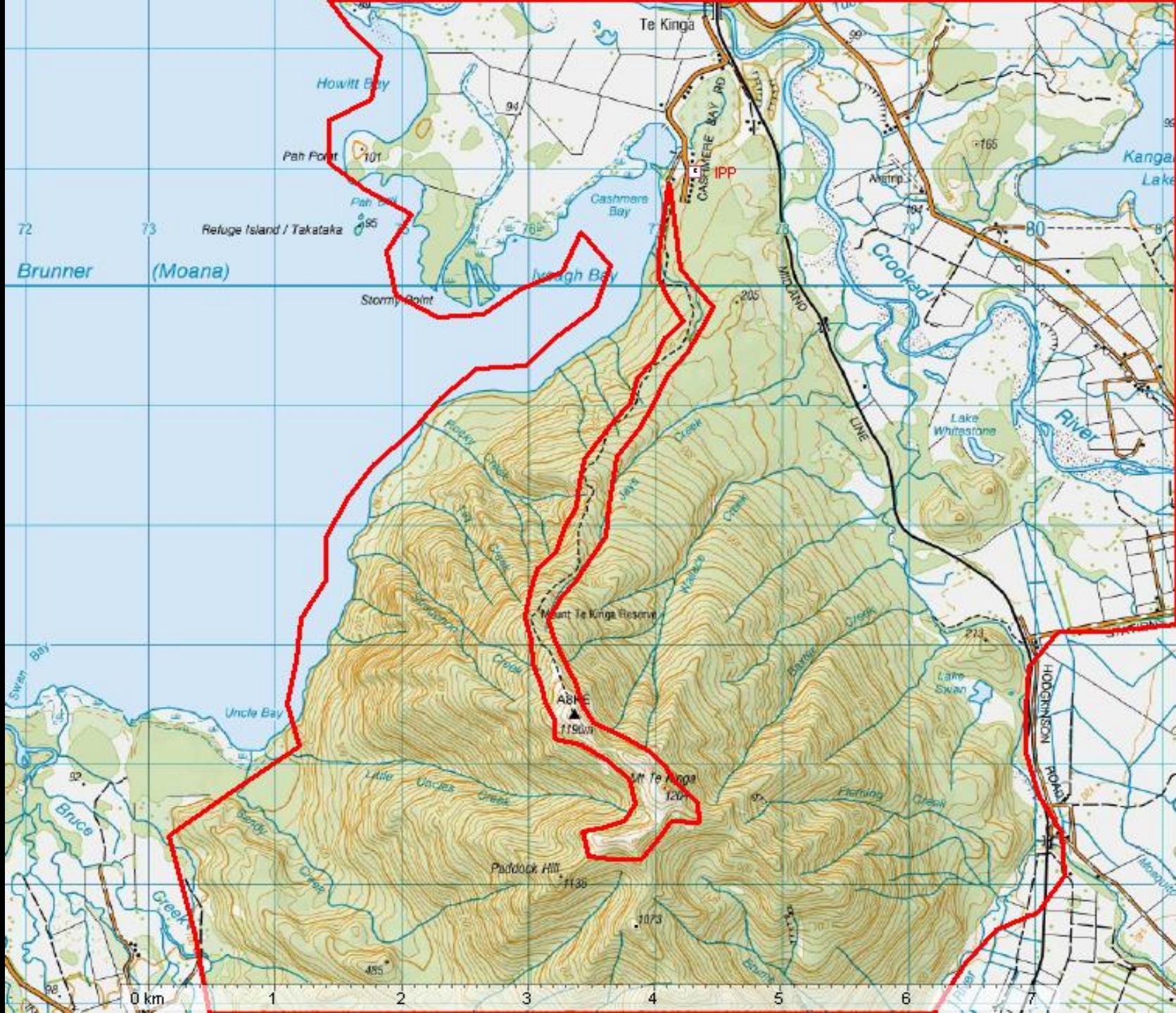
6 – 10 Planning Regions



Manage the Initial Response

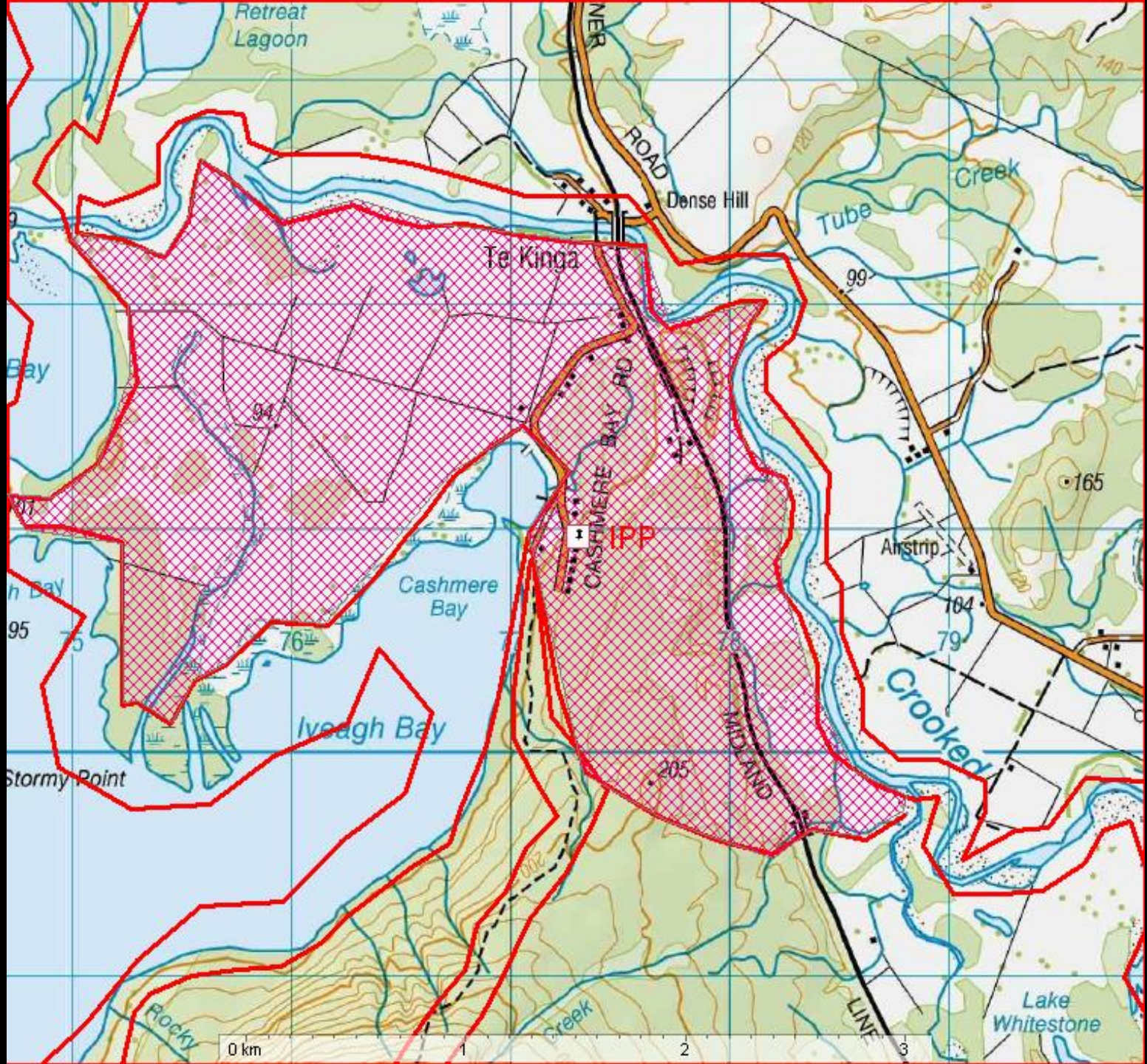


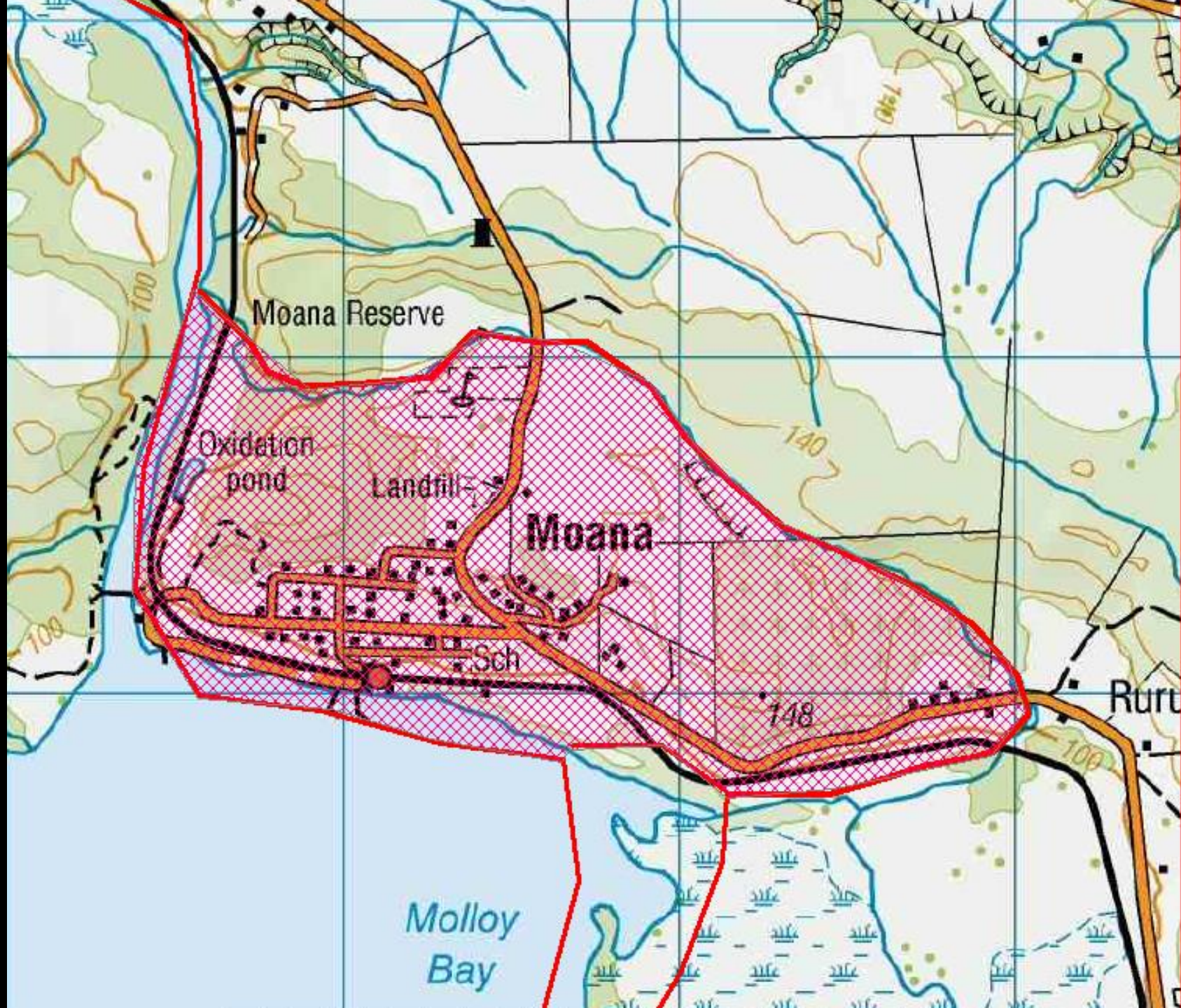












Moana Reserve

Oxidation pond

Landfill

Moana

Sch

Molloy Bay

Ruru

140

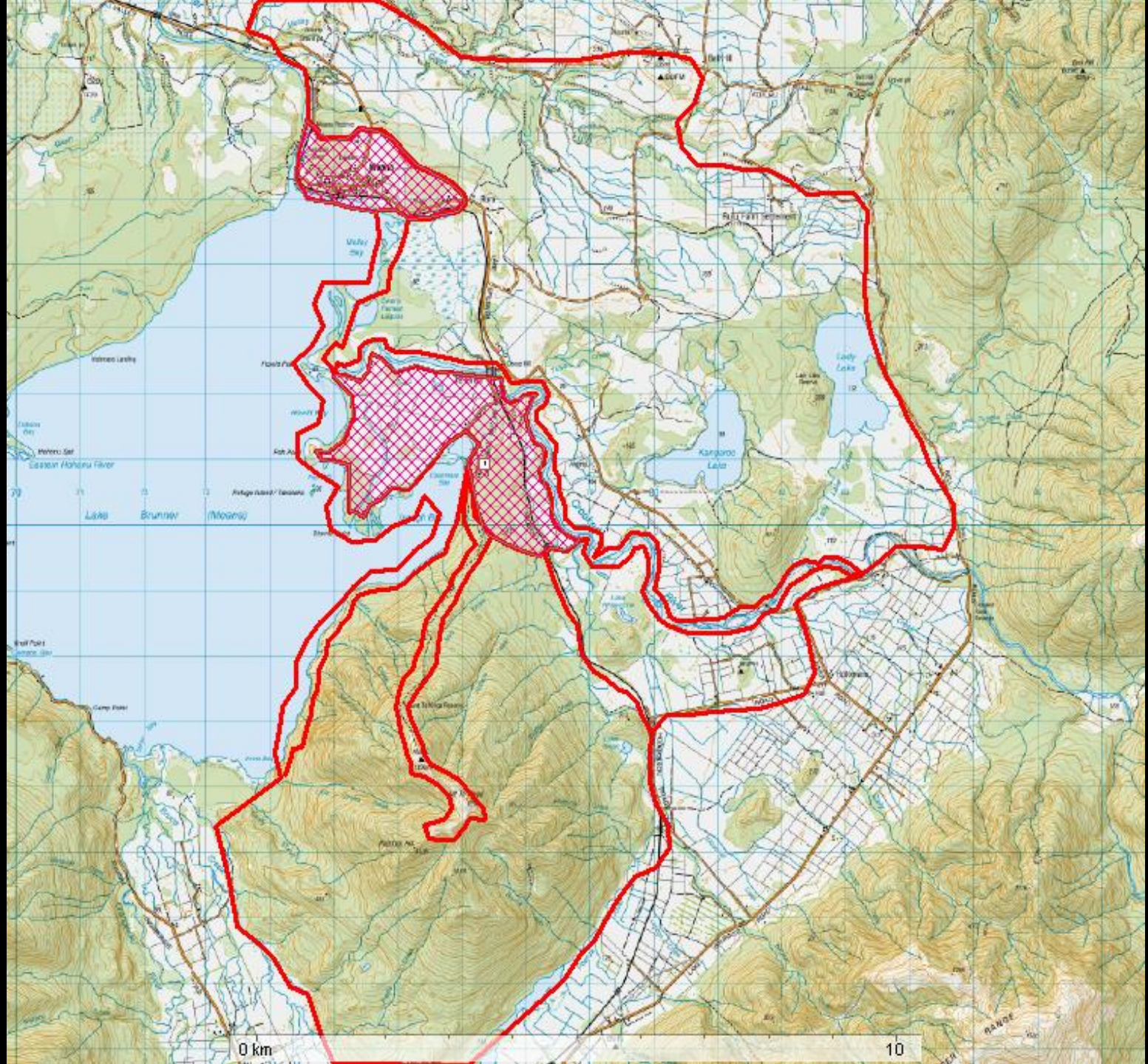
140

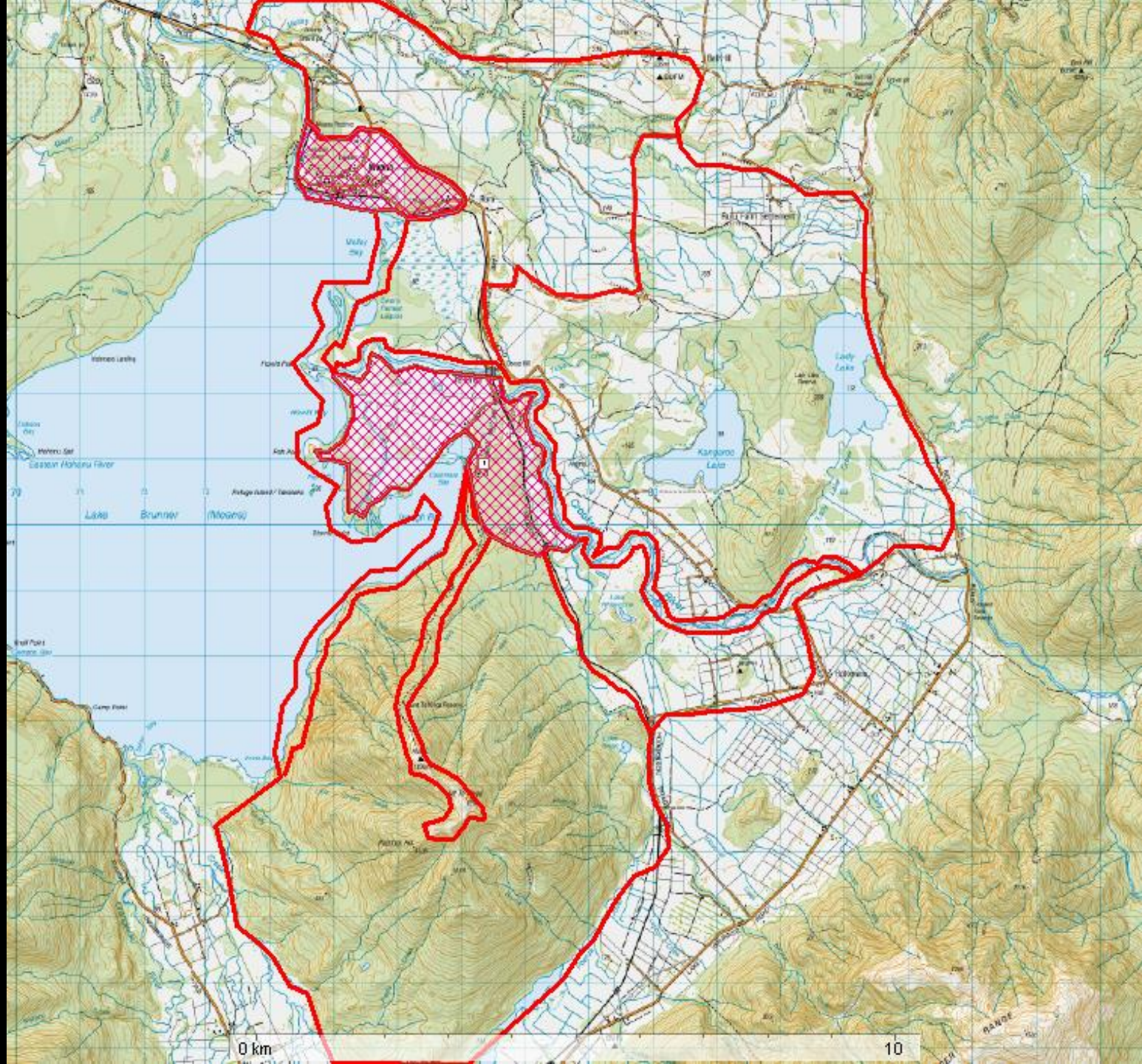
148

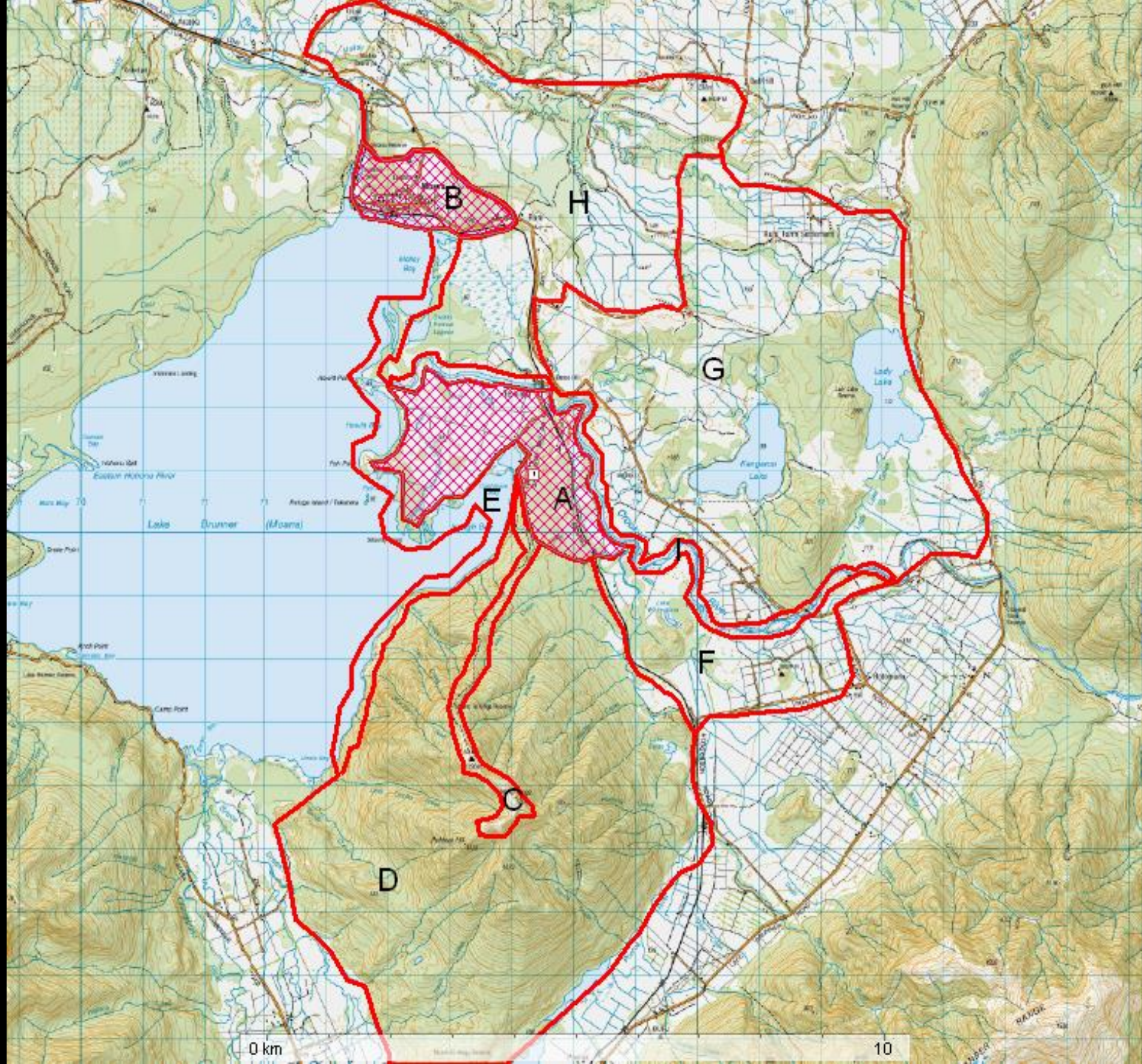
100

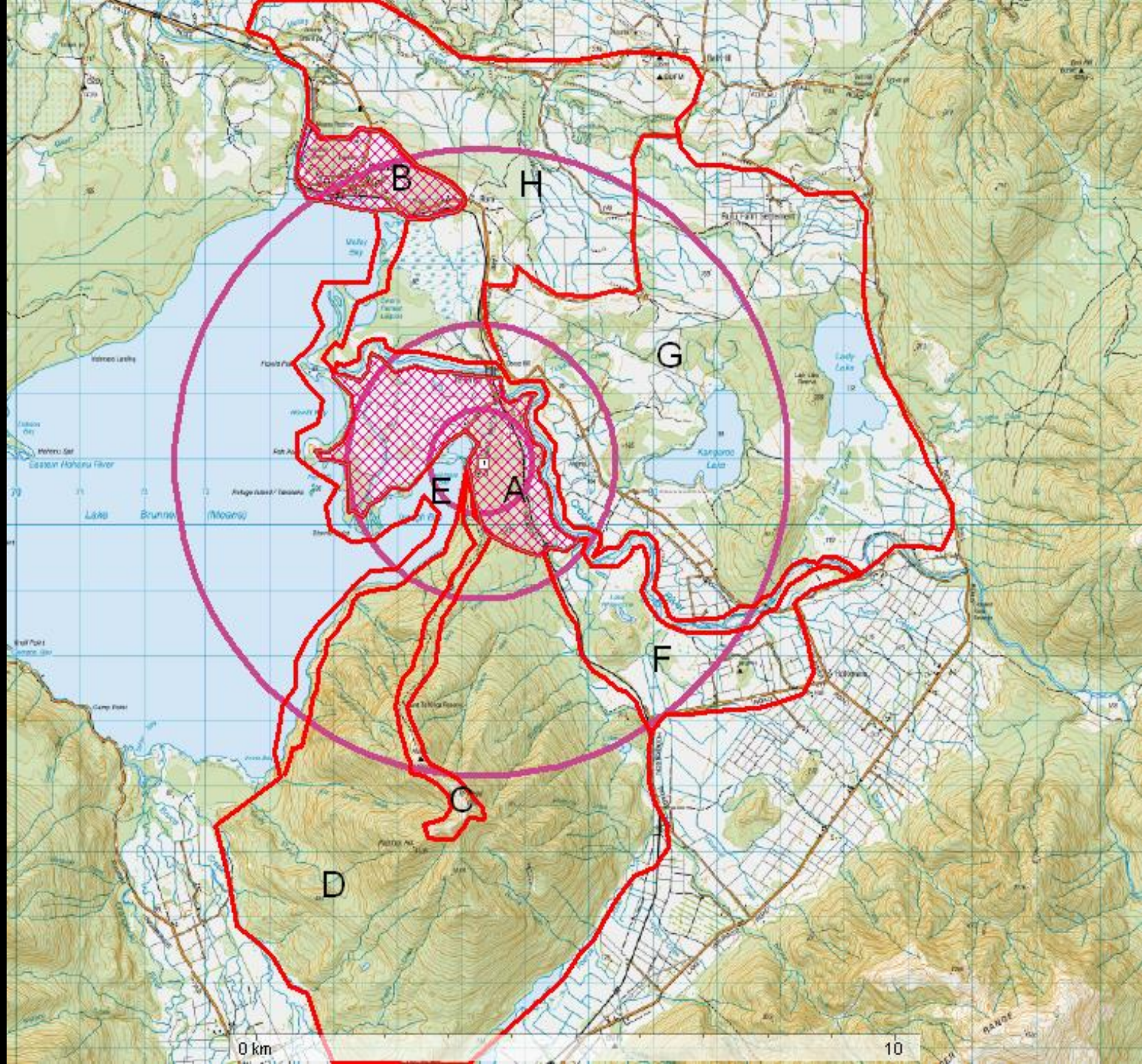
100

100





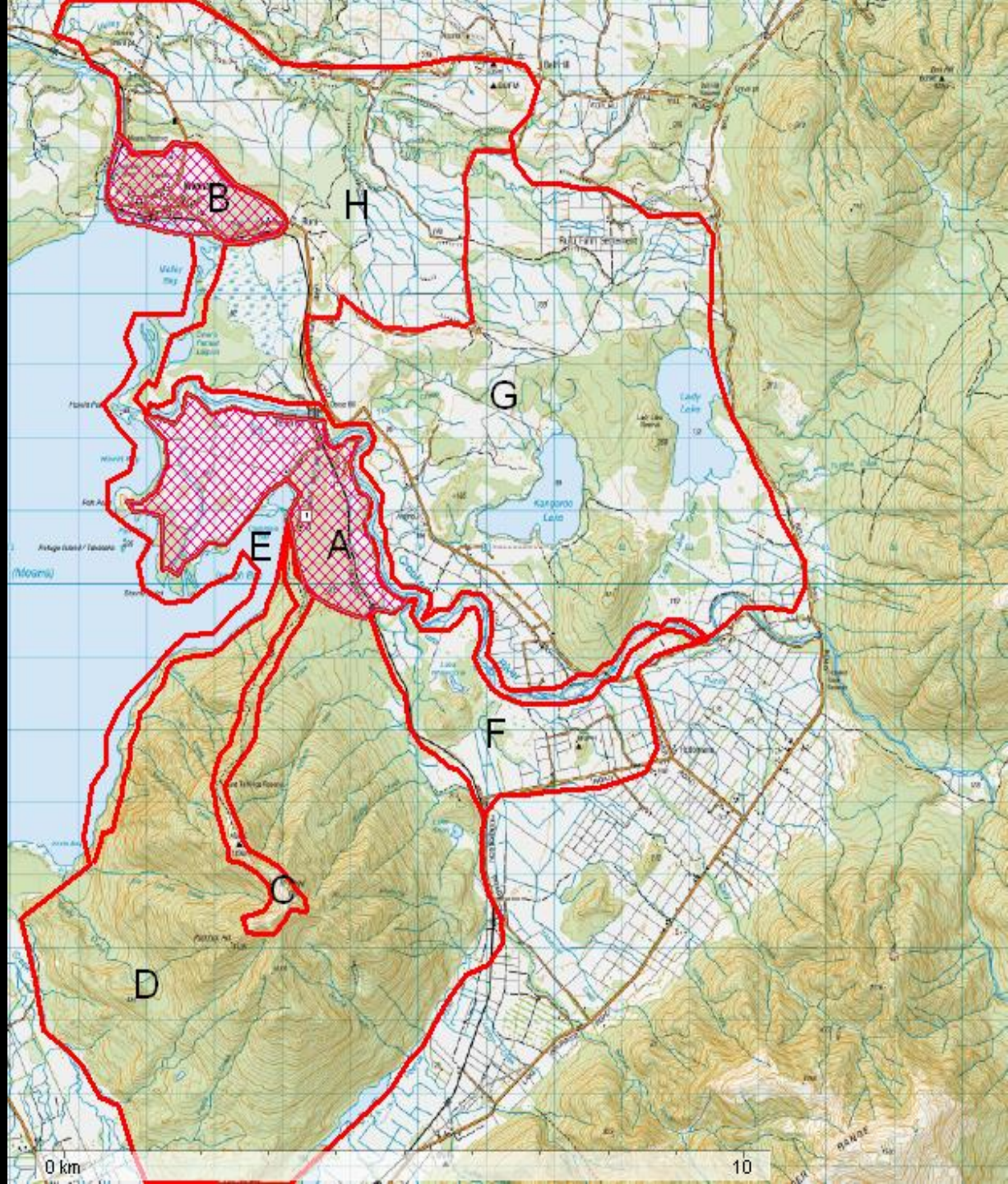




0 km

10

- A – Iveagh Bay settlement
- B – Moana Settlement
- C – Mt Te Kinga Track
- D – Mt Te Kinga Mountain
- E – Beach
- F - Area SW of Te Kinga and settlement
- G - NE of Crooked River.
- H – NW of Crooked river
- I – Crooked River



Probability of Area POA

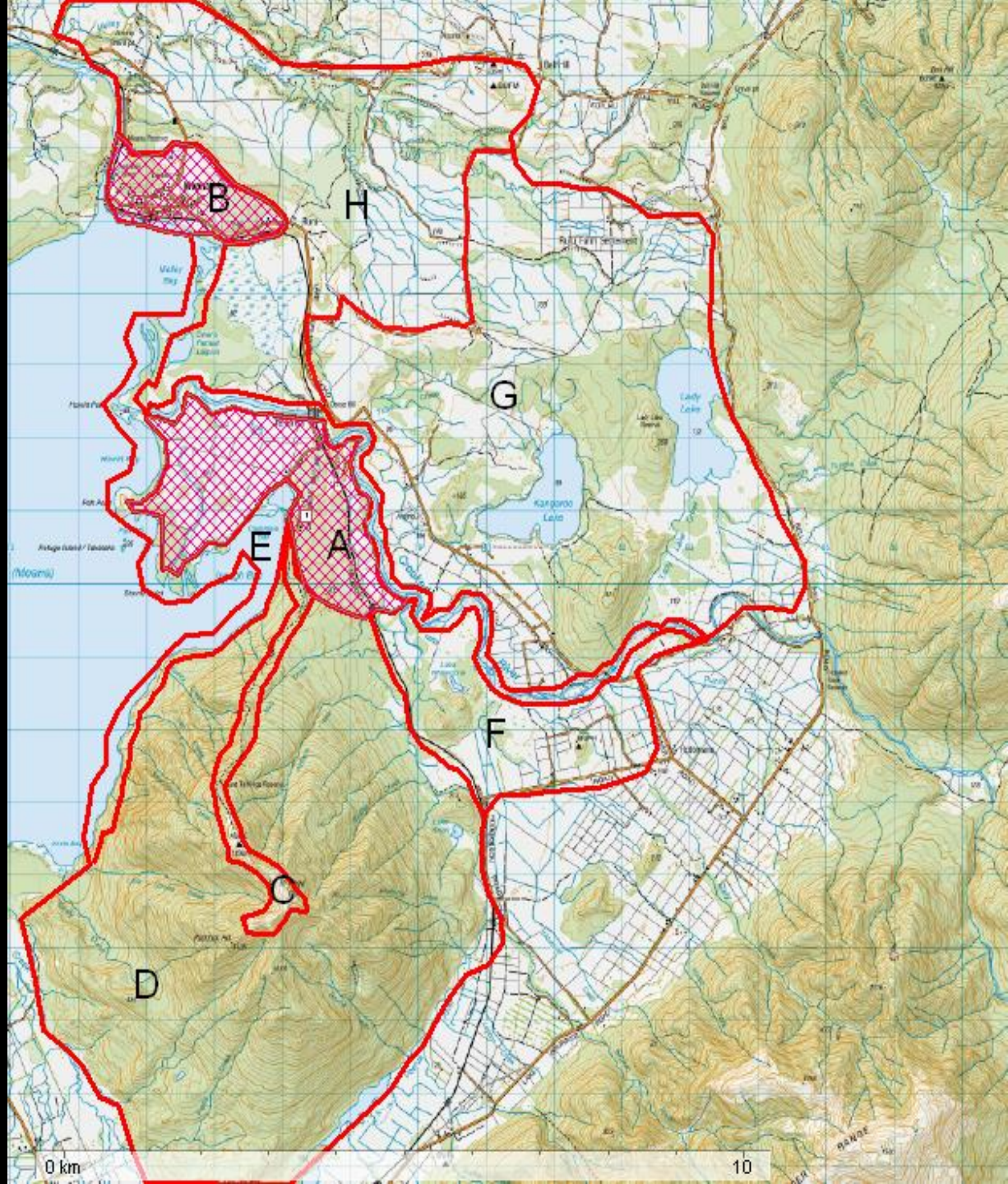
Group exercise – Kayla workbook.

In your groups use POA consensus form, p109.

Bear in mind ALL the information you have collected so far in Operation Iveagh Bay.

Weather, MPR, Urgency forms, interviews, terrain, and the fact that you already have people in the field doing the obvious and they have found nothing yet.

- A – Iveagh Bay settlement
- B – Moana Settlement
- C – Mt Te Kinga Track
- D – Mt Te Kinga Mountain
- E – Beach
- F - Area SW of Te Kinga and settlement
- G - NE of Crooked River.
- H – NW of Crooked river
- I – Crooked River



Look at your high probability zones.

Which regions are they?

Have they been adequately searched during reflex tasking?

If you reflex tasked teams find nothing – what comes next?

What resources will you need and what do you want them to do?

