

Sign marking and identifying direction



Lesson objective:

Mark sign for preserving and assess direction from sign.

Why?

At times it is necessary to return to sign to gather further information.

Determining the direction of sign allows the tracking team to assess the subjects heading.

Phase 1: Marking sign

The decision to mark sign is up to the tracker.

Times to consider marking sign:

- When sign is scarce
- When locating conclusive sign
- Indicator pace
- Change in sign picture
- When a new visual tracker begins on the track.



Phase 2: Determining direction

Pointers



A pointer is when vegetation is pushed in the direction of travel. The vegetation remains in the pushed position even once the subject has passed.

Phase 2: Determining direction

Colour



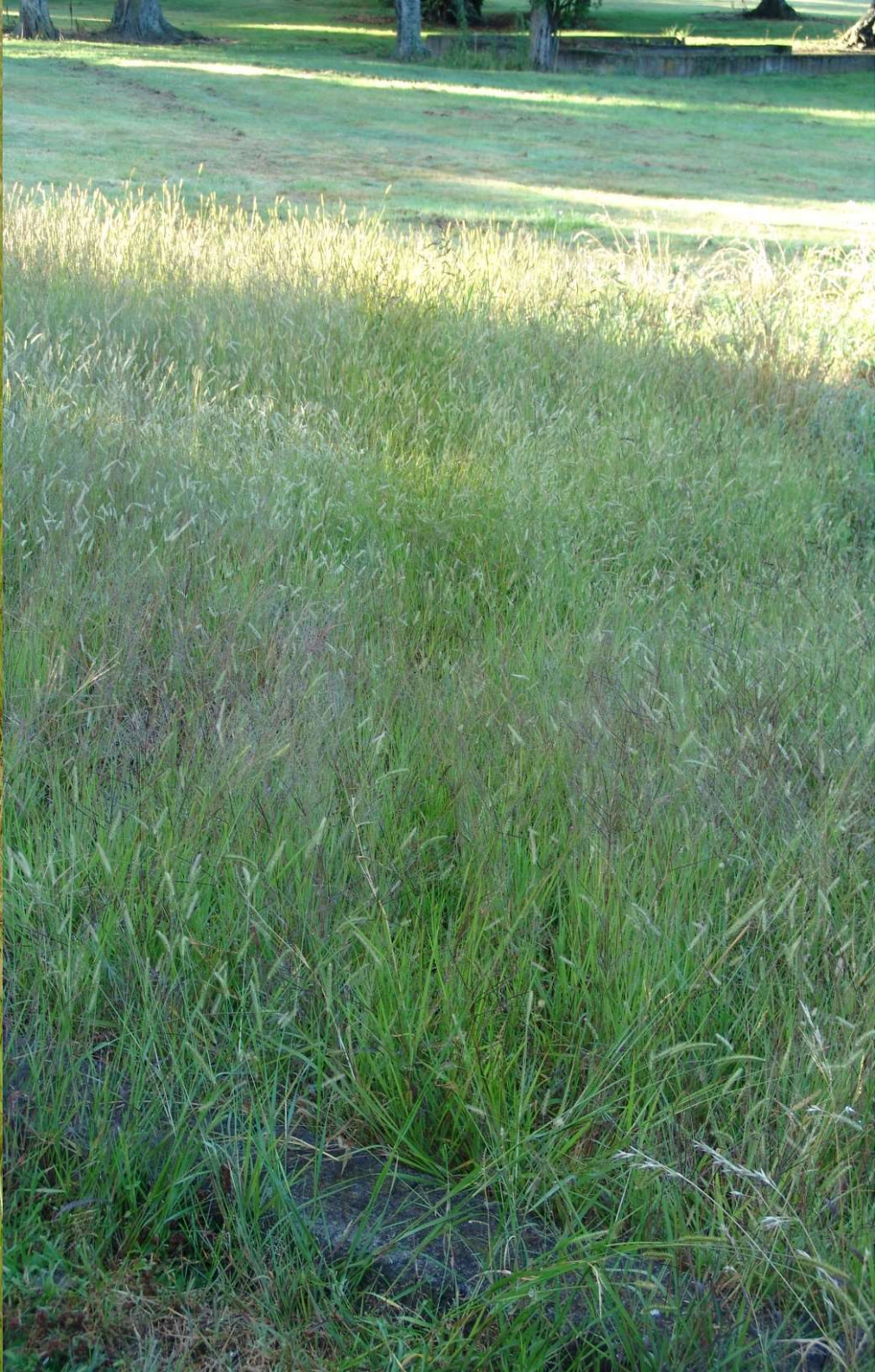
The colour of the grass is lighter where a track has been made.
When the track colour is dark the direction of travel is towards you.

Phase 2: Determining direction

Pressure



The most pressure applied to the ground shows the direction of travel. The pressure sign is easily seen in soft earth.



Phase 2: Determining direction

Stones
Dirt lumps
Twigs
Leaves
Vegetation



The dislodging of small stones or dirt lumps along a track is another method of determining direction.

Summary

This short lesson is part of cutting sign. The reason it has been placed in this position of the module is to assist with Sign Aging. Having knowledge on sign characteristics enables the visual tracker to confirm the sign cut is that of the subject.

Determining the direction of sign allows the tracking team to assess the subjects heading.

Copyright © CREATIVE COMMONS

These works may be downloaded or shared as long as NZSAR is credited. They may not be changed in any way or used commercially.

